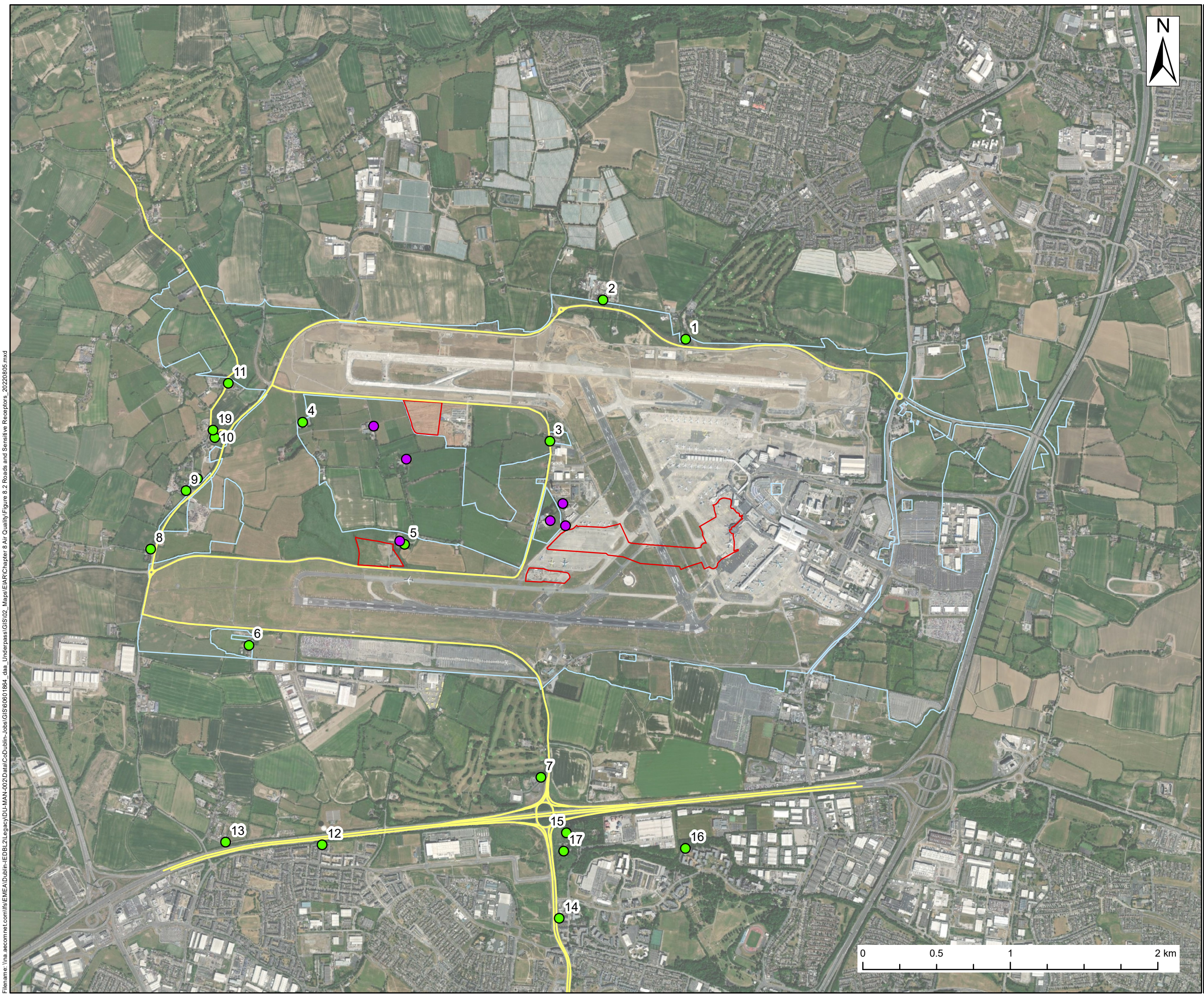




- LEGEND**
- Application Site Boundary
  - Land owned by daa
  - Modelled Road Receptor
  - Representative Sensitive Receptor
  - Closest Construction Dust Sensitive Receptor



**Notes:**  
 Service Layer Credits: Source: Esri, Maxar, Earthstar Geographics, and the GIS User Community

**AECOM Internal Project No:**  
 60601864

**Drawing Title:**  
 ROADS AND SENSITIVE RECEPTORS

**Scale at A3:** 1:24,000  
**Drawing No:**  
 FIGURE 8.2  
**Drawn: Chk'd: App'd: Date:**  
 BS TD CB 08/08/22

Filename: \\na.aecomnet.com\fs\EMEA\Dublin\IEDBL\Legacy\DU-MAN-002\data\CODublin-jobs\GIS\60601864\_data\_Underpass\GIS\02\_Maps\EIAR\Chapter 8 Air Quality\Figure 8.2 Roads and Sensitive Receptors\_20220805.mxd

This drawing has been prepared for the use of AECOM's client. It may not be used, modified, reproduced or relied upon by third parties, without the prior written consent of AECOM. AECOM accepts no responsibility, and denies any liability whatsoever, to any party that uses or relies on this drawing without AECOM's express written consent. All measurements must be obtained from the stated dimensions.